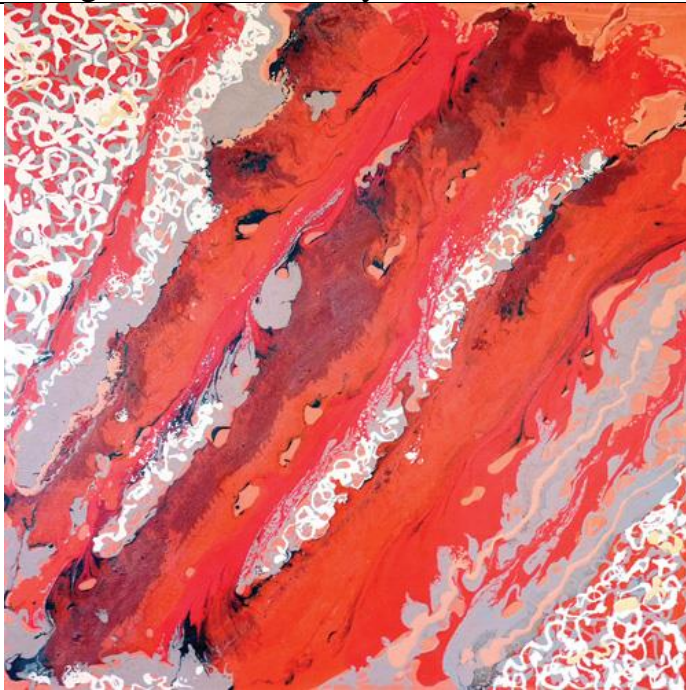


Welcome to our first newsletter of 2015.

We celebrated our second birthday late last year – and what a successful two years it has been. Outgoing President, Colin Billington, an energetic foundation member whose hard and persistent work helped make our ArtSpace Gallery the success it is today, has moved to concentrate on other things and we wish him all the best and extend our thanks to both him and of course the rest of our wonderful volunteers for their tireless work since ArtSpace became more than just a dream.

This next year promises more wonderful exhibitions – and our very first commences with gusto on 15 January, 2015.



## *Featured Artist:*

### *Mandy Gunn*

Mandy works across a variety of media including monoprints, painting, sculpture and installation, the latter two mainly from recycled materials.

Her art school training extended over 7 years with a Bachelor of Arts at Monash, a Post Graduate and then a Masters degree at the Victorian College of the Arts. She is also a qualified and experienced teacher with over 40 years practice, the last 12 at RMIT University.

Mandy has exhibited extensively throughout Australia, with a number of overseas shows including the International Tapestry Triennial at Lodz, Poland in 2011. Her work has been acquired for a number of Regional and City Gallery collections and she has won quite a few awards. [See [www.mandygunnart.com](http://www.mandygunnart.com) for lots of images].

Trips away and projects including Antarctica, the outback, a stint working at Aurukun Community on Cape York, residencies at Bundanon, Mildura Art Vault, Broken Hill, The Floating Land event at Noosa and other places have been some of the inspirational places for Mandy's work.

Following one of the fabled exploration treks across The Simpson Desert, Mandy recorded her challenging journey over red sand dunes on sand formed tracks, sketching along the way. On the return to her studio Mandy was inspired to depict the forming and reforming nature of sand, wind and salt on a wild and untrammelled landscape and has created a stunning new series of work exhibited in

### **'CROSSING THE SIMPSON'.**

**Exhibition:** Mandy Gunn, 'Crossing the Simpson'  
15th January to 9th February 2015

After a hugely successful exhibition spanning 40 years, Laurel Billington has consented to keep some of her pieces with ArtSpace for sale. A maker of clay pots, Lino cuts, etchings and paintings she designs with detailed interest in colour, pattern and shape. Themes are personal and production limited, as she spends many hours on each piece.



### *Trivia Night to support ArtSpace.*



Is your mind full of useless facts? Are you seemingly the only one amongst your friends who can tell who painted pictures of lilies in his garden in Giverney, or who can answer which pottery form takes its name from the Italian for "baked earth." Book your table of six at The Royal Mail Hotel, Archies Creek on 14 January 2015 starting at 6pm to test your wits, have some fun and raise funds for ArtSpace. Only \$5 entry. Phone: 56787344 after 12 noon.

Would you like to be a greater part of ArtSpace? What about thinking about having your own exhibition, or simply selling your work through our Gallery. You can also be part of our community by volunteering (for which we are in desperate need). Contact us either through the Gallery – or by emailing [artspacenquiries@gmail.com](mailto:artspacenquiries@gmail.com). For new volunteers – please contact Kaye Hatton to update your contact details and availability on [artspacerosters@gmail.com](mailto:artspacerosters@gmail.com)

**PS** ..... If you are coming past ArtSpace before the 16<sup>th</sup> of January - why not have a look next door at the Wonthaggi WoodCrafters display. Lots of wonderful woodcraft by some of ArtSpace artists - as well as others from around Bass Coast.

**"I DREAM MY PAINTING, AND THEN I PAINT MY DREAM"**

**VINCENT VAN GOGH**

