

ArtSpace

W o n t h a g g i

NEWSLETTER #3

MARCH 2015

We have a plethora of artists, all so creative across so many disciplines. We have had a raft of suggestions about how to best display everyone's work to the optimum and will be acting on this on the next bump in on 10th of March. Essentially the change will be to distinguish between the fine art hanging and display Space and the craft hanging and display Space which has proven successful in so many Galleries.



Should any artists have any ideas they would like to feed in to us prior to the 10th – please contact Dennis Leversha (he's on the right with John Mutsaers) who is co-ordinating the Space change.

And because we are so sure you will love it we will have a grand unveiling on 15th of March at 2pm. Please come and help us celebrate the change.

From celebrations to introspections. Bev Leversha has exhibited with ArtSpace from the very beginning – and she's here to stay.



Featured Artist: Bev Leversha

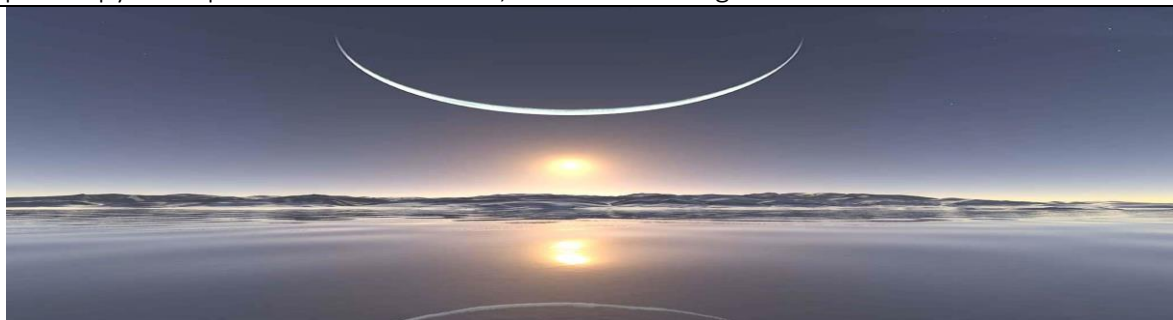
It's a wonder that Bev is even here given how she started as a ceramicist. After studying for her Diploma of Pottery at RMIT she went to gain some industry experience and was employed in a small tin shed of a factory in Abbotsford. It didn't auger well when the boss found out she was left handed and so kept smudging the designs that he had created to be applied by right handed people. But when he found that she could create better free hand designs herself she was given her will to do whatever she wanted.

However because of her skill it meant that she was placed in the segregated male area with her only companions being those recently arrived from European war torn countries. They couldn't speak any English and took great delight in watching this feisty young 5 foot tall woman lift the casts onto the shelves on wobbly plaster boards. And all the time covered from head to foot in a fine red dust that was sprayed onto all the ceramics before they were fired.



After a strike at the factory in which she could not participate because she couldn't understand what her colleagues were saying, found her looking for other work which she found at Sale Technical College prior to attending the Technical Teachers College in Toorak. She worked in many technical schools over the years, and throughout all the time continued to pot – mainly utilitarian wheel work – in both earthenware and stoneware clays using a homemade gas kiln and a wood fired kiln. Lately, Bev's attention has been drawn to ceramic jewellery and colourful ceramic bells, which she sells at a prodigious rate at ArtSpace.

Bev's philosophy is simple – I know what I like, and I like making what I like.



Winter Solstice Art Show

ArtSpace wants to bring light into Gippsland's cold winter with an exciting new art show over the winter solstice of June.

Artists are invited to submit up to two paintings in any medium, no larger than 70 cm X 70 cm (including frames) and will be asked to complete and sign an entry form. A nominal fee of \$10 will apply which will be discounted to \$5 for students.

Selected works will be exhibited at ArtSpace for the four week block with a launch date of 7th of June at no charge, gaining exposure (and hopefully sales) for aspiring artists.

The People's Choice will receive the sum of fees – so the more entries we get – the more the winner receives. As they say in the classics – what goes around – comes around!

Early enquiries may be directed to John Mutsaers artspaceevents@gmail.com

Benefits of Membership

Many of you will know Malcolm Bain, Anne Bain's son. Well he is now the chef at The Royal Mail Hotel and is holding a degustation on 14th of March. Details are the end of the newsletter.



The Royal Mail Hotel
Archies
Creek

In addition a car rally will be held on the afternoon of 8th of March. Proceeds from the \$10 per car entry will go to ArtSpace – so not only will you have a great time following the clues around our glorious countryside – you will also know you are helping ArtSpace. Bookings 5678 7344 after 12 noon.

PS A huge thanks to Phil Henshall for donating a laptop to ArtSpace. This donation will help us in connecting people and artists through our website and facebook page as well as keep our bookkeeping and correspondence in order. Thanks Phil.

PPS For those on the internet – check out www.facebook.com/ArtSpaceWonthaggi. You can listen to Susan Hall's interview with 3mfm about the Gippsland 14. And there is more! Thanks to David Norton from Ramalama Book Exchange next door. A whizz at capturing Wonthaggi happenings he has recorded our last bump in and posted it on Youtube. Have a look at us on www.youtube.com/watch?v=17Ho9uLxE-o. And while you are still in cyberspace – please send artspacenuquiries@gmail.com your artist cvs and pictures. We are now live! So promote yourselves!

PPPSThe Bass Coast Artist' Society are holding their Easter Art Exhibition with an Official Opening on April 3rd. Check out their web site for details www.bassarts.org.au

"ART IS NOT ABOUT WHAT YOU SEE BUT WHAT YOU MAKE OTHERS SEE"

EDGAR DEGAS

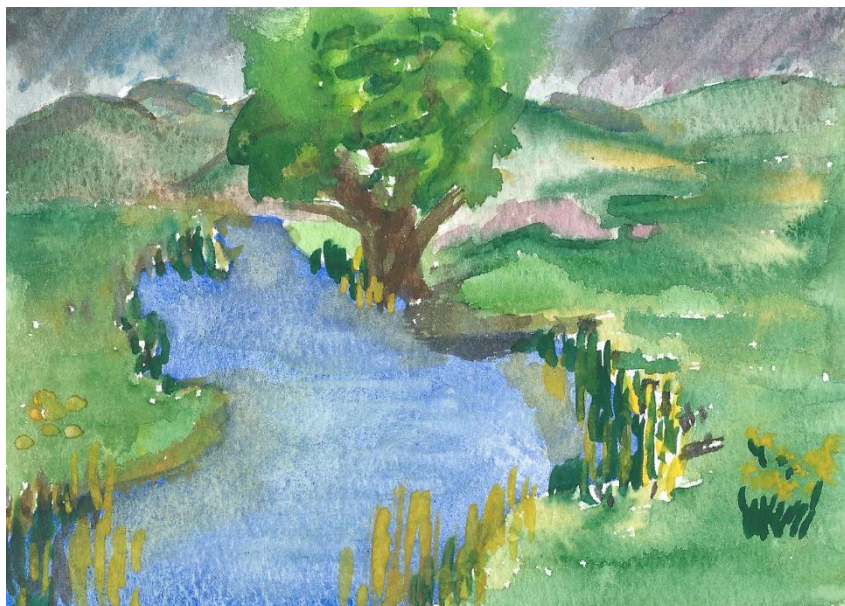
The Last Word

Train Windows and Beyond

Drab grey concrete fencing, winning
the battle against the elements
Ruins, stone cottages, losing
each encounter and departing without sentiments.
Silhouettes of branches, their buds lusting
the sun, for the birth of their leaves.
Long, green grass licking
the trunks of the evergreen trees.

There is no intervention
in this equation.
Destiny is dictated
by the weather and occasion.
The landscape is scarred with constant reminders
of attempts made in vain to become the inventors
of alchemic solutions
to Mother Nature's perceived unkindness.

Matt Stone © 2000



THE FOX HAT



AUTUMN 4X4 DEGUSTATION

SATURDAY 14TH MARCH, 2015 @ 6PM FOR 6.30PM

4	TASTES OF THE SEASON
	TASTES OF THE SEA
	TASTES OF THE PADDOCK
	TASTES OF CONFECTION

ACCOMPANIED BY MALLANI WINES



In order to accommodate those who are not wine drinkers – two complimentary beers or soft drinks will be provided during the evening as an alternative to wine.

ONLY \$55 PER PERSON

ARTSPACE MEMBERS RECEIVE A \$5 DISCOUNT

FIND US AT THE ROYAL MAIL HOTEL, ARCHIES CREEK



BOOKINGS 5678 7344 AFTER 12 NOON