

**Merry Christmas and a very
Happy New Year to you!**



NEWS

Archies' Bald Prize

It's a bit unique, it's a bit silly – but we are targetting mid 2019 to be the inaugural portrait and sculptural exhibition at Archies Creek Hall for anything bald. Your piece will capture a person bald through chemotherapy, alopecia, shaving, genes, just born or simply a vision of what someone would look like without hair. Paint or sculpt and enter an exhibition that will draw attention to the beauty of the hairless head.

Intrigued? Want to be kept in the loop? Want to enter? Want to help? Get in touch with us – archiebaldprize@gmail.com



EXHIBITIONS & EVENTS

27 Nov 2018 to 7 Jan 2019

Open Exhibition

All artists exhibition for the high season

8 Jan to 18 Feb 2019

Arthur Nilsson - Solo Exhibition

Opening 4-5pm Saturday 12th January 2019

19 Feb to 1 Apr 2019

Jacki Moss Exhibition

Opening 2-4pm Sunday 24th February 2019

ArtSpace Gallery Wonthaggi 1 Bent Street Wonthaggi Vic 3995
T 03 5672 5767 E artspacenquiries@gmail.com W artspacewonthaggi.com.au



FEATURED ARTIST ... ARTHUR NILSSON

Arthur Nilsson has turned up for the interview for this article with his long fingers bearing evidence that they have recently been engaged in painting in readiness for his solo exhibition at ArtSpace.

A private man who doesn't boast his achievements, a Google search will find more articles about his golfing prowess than it will about him as an artist. He says his handicap is 25 which my husband Matt informs me is termed a sandbagger – a handicap high enough to be a great asset in competitions.

Arthur's interest in his youth was sport and he didn't get interested in art until his late teens when he had a Year 11 inspirational art teacher who taught him to appreciate art as well as the techniques of painting and ceramics.

Except for a small stint teaching at a rural school in Mincha near Kerang for one year immediately out of Teachers' College where he taught the whole town's worth of primary kids – a total of 24 – Arthur has always been a city slicker.

He had ambition and knew the only way to succeed was to study more and returned from Mincha to his roots in Melbourne to study a Certificate of Art at Preston Institute, then a Diploma of Art at RMIT and later a Fellowship from the same institute. Towards the end of his studies he was asked to be part of a group exhibition at the National Gallery of Victoria. He laughs as he tells me that he was still a student at the time – and already 30 years of age.

Arthur mixed his studies of art with business administration which is a curious mix of right and left brain tendencies – and which benefited him as he rose in the ranks of education from teacher to Head of Art at several secondary schools, finally to be the Principal at a large secondary college in Melbourne.

He loved teaching art, particularly when he came across really talented students, such as William Ricketts' granddaughter, Karen, who obviously had the same artistic genes as her grandfather. In the meantime, he continued to improve his art techniques. . Despite becoming adept at mixing his own glazes and building his own kiln to make his ceramics, Arthur decided to abandon the "heaven knows what poisons in the glazes and the whole bloody messy pursuit" in favour of the joy of painting in oils.



Oils, he says, provide him with a richness of colour and the ability to capture the light that acrylics simply can't.

He equally loved it when he took on more administrative roles within the Education Department which challenged him intellectually. None more so than when he was headhunted to work at Wesley College. The College was looking for a rare breed of staff member – a secondary school Principal with an art background. Arthur was offered a 12-month post as Director of Arts at the Prahran Campus. It was his most challenging role, to get a highly passionate, talented art faculty working as a team. It was a marvellous opportunity to end his formal career.

It was when he finally retired 19 years ago that Arthur and his wife, Robyn, had to choose where to live from many places along the coast from Tasmania up to Brisbane. The choice in the end was easy.

Arthur moved from Middle Brighton 14 years ago to Inverloch. There were many reasons for the move, including the beautiful environment which provides so many scenes in which to indulge in his love of painting – but to be frank, it was an easy decision to make economically. Simply put, the Nilssons knew that they would have a better lifestyle here and they've made many wonderful new friends. It is a decision they have never regretted.

Arthur has had a number of solo painting exhibitions, but now wants to have this exhibition at ArtSpace of the last 2 years of paintings. cont'd...



Land and Sea
on
EXHIBITION OF PAINTINGS
by
ARTHUR NILSSON

13th of January 2019 to 18th of February 2019



1 Bent Street, Wonthaggi - Ph: 03 5672 5767

THE
Baldessin
PRESS & STUDIO

PRINTMAKING / RETREATS / RESIDENCIES / STUDIO ACCESS

Set within the idyllic surrounds of the St Andrews bushland The Baldessin Press & Studio is a place of creativity and a retreat for artists, perpetuating the generous and collaborative spirit of the renowned printmaker George Baldessin.

PRINTMAKING
Etching, photogravure, monotype, drypoint, collagraph, linocut, wood engraving & more.

RETREATS & WORKSHOPS
Regular weekend workshops, customised retreats and summer intensives.

To keep up to date, follow us on Facebook. For the latest workshop dates and residency details please see the website.

RESIDENCIES
Self-contained accommodation onsite and full studio access.

30 Staffenbury Ave, St Andrews Vic 3761 - 0648 144 440 - www.baldessinpress.com.au



Jan. 2019

ORBOST EXHIBITION CENTRE
8 Clarke Street

10am to 4pm
January 4th to 25th

ADMISSION FREE!

Prizes for:
Furniture and Design
Reuse, Reduce, Recycle
Turning, Carving or Sculpture
Schools and Amateur
Acquisition
People's Choice

Further details and entry forms:
<http://orbostexhibitioncentre.org/>

Celia Rosser
Gallery



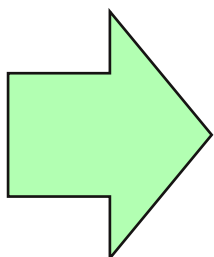
Andrew Rosser - Director
andrew@celiarossergallery.com.au
0455 777 334

www.celiarossergallery.com.au
Promontory Road, Fish Creek 3950
Open Fri, Sat, Sun 10am - 4pm
Wed Sat, Sun

The theme of this exhibition of paintings is “Land and Sea” and as much as he has gained inspiration from the changing moods of nature and the grandeur of the Bass coast, he has also taken inspiration from the scenes he has experienced from his travels of the world. Arthur and Robyn have been regular visitors to Asia over the last number of years. More than 10 years ago, they met a very small boy selling his basket of goods in the street. They learned that his family really needed some help. On meeting them, it was evident that young Toh should be going to school to learn English and that his father, Dinh, a fisherman, was unwell due to having a seriously painful shoulder, making it difficult to row the small fishing boat and to sleep at night. Arthur supported Toh’s schooling for some years and also purchased a motor to be installed in the boat. Those things made a big difference to the family generally and now Toh has grown up and will be married soon. Dinh has no problem with his shoulder and Toh’s good English enables him to have a small tourism business of his own. Caring for others, through both his career and travels, has been an important part of Arthur’s life. In the same vein he cares about his art. Be sure to come along at 4pm on Saturday the 12th of January for a glimpse of his world.

Written by Liane Arno in collaboration with Arthur Nilsson

DON'T FORGET ...



Workshops at Archie's Creek Hall are ongoing through to March 2019.

To find something to inspire your creativity and learn something new, go to:

<http://artspacewonthaggi.com.au/index.php/workshops/>



OUT THERE

an exhibition of
WATERCOLOURS
by
GILLIAN CARPENTER
DECEMBER 6-31, 2018

Opening Event
Saturday, December 8
5.00 - 7.00pm

STOCKYARD GALLERY
12 McDonald St Foster | Ph 5682 1125
www.stockyardgalleryandshop.org.au
Open 10am - 4pm daily.



STOREHOUSE

rare collection of **National Gallery** limited
edition screen prints by

Angela Newberry

@ Storehouse Koonwarra
Opening Saturday December 1st, 4pm-6pm

+61 408 353 976 hello.storehouse@gmail.com storehousekoonwarra.com
4 koala drive, koonwarra 3954 / shops B,C,D 100 barkly st. st kilda 3182

**STEFANI HILLTOP
GALLERY**

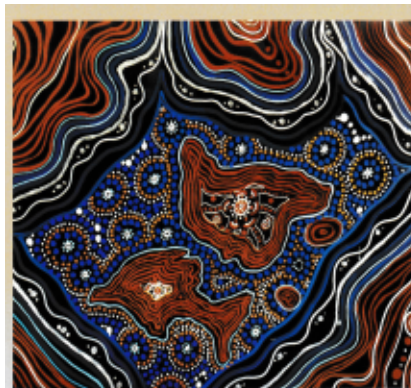


Artist in residence:
Bianca Biesuz-Stefani

OPEN MOST DAYS
or by appointment
03 5683 2253
0457 832 253

39 Keanes Road
Fish Creek

The Press Gallery Project - Fish Creek



Gallery 1

Milowl Dreaming
by Steve Ulula Parker

Descendant of the Boonwurrung Yorta Yorta Erub people

The title: *Baler Wareeny Binanga Connection*
(Strong Ocean Country Connection)

All works are of his Boonwurrung country, places &
stories with a strong connection to the ocean and bay
in which he lives. Milowl Mir ran Bak to Warrnoon
(Phillip Island Westport Bay to Wilson's Point)



November 28 - December 31
Opening Sunday December 2 @ 2pm



Gallery 2 - "Horse" by Zelda Petherick
November 28 - December 31 Opening December 2 @ 2pm

Gallery 3

"Tide Lines"
by Jacque Chambers



84 Whirlaw Street, Moorabbin, Victoria
Open 10 - 4 (closed Tuesday)
Ph: 5664 0101
www.meeniyasartgallery.com.au



Newsletter # 36
December 2018



ENTRY FORM
Entries Close
22 February 2019

LOST LANDSCAPE
ART PRIZE & EXHIBITION 2019

PROM COAST
ARTS

FIRST PRIZE
\$1,000

BEST PAINTING
\$100

BEST DRAWING
\$100

BEST PRINT
\$100

BEST PHOTOGRAPHY
\$100

BEST OTHER MEDIA
\$100

PEOPLES CHOICE
\$100

JUDGES
TBA

ENTRIES CLOSE
Friday 22 February 2019

OPENING (and announcement of winner)
6.00pm Friday 1 March 2019

EXHIBITION
Thursday 28 Feb 2019-
Monday 25 March 2019.

LOST LANDSCAPE
Entries are now open for
South Gippsland's new
landscape art prize.

STOCKYARD GALLERY

(03) 5682 1125
cnr McDonald & Main Street
Foster, Vic. 3960

OPEN
Monday to Sunday
10.00am to 4.00pm

FREE ENTRY

PROM COAST
ARTS

STOCKYARD
GALLERY
& SHOP

The Press Gallery Prints - Fish Creek

<p>CONDITIONS OF ENTRY</p> <p>GENERAL</p> <p>1.1 The artwork is to be an interpretation of a 'Lost' South Gippsland landscape.</p> <p>1.2 The <i>Lost Landscape Art Prize</i> is open to any artist living and working in Australia.</p> <p>1.3 Entrants may submit up to two entries. Entries may be of any medium and must not exceed 1sqm (with frame). Sculptures must not occupy a floor area greater than 2sqm.</p> <p>1.4 Works must be recent and have been completed after 1st January 2018.</p> <p>PAYMENT AND ENTRY</p> <p>2.1 A non-refundable payment of \$20 is applicable for each entry. Prom Coast Arts will not store any payment details, or share your information with any third party.</p> <p>2.2 Entry form and payment(s) must be received by Prom Coast Arts by Friday, 22 February 2019 and must include: a) A completed entry form. b) Payment of \$20.</p> <p>DELIVERY OF WORK</p> <p>3.1 Artworks for exhibition must be professionally presented, ready to hang with either two D-rings or hanging wire attached.</p> <p>3.2 Artworks must be delivered to the gallery between 9am and 12pm on Wednesday 27 February, 2019.</p> <p>3.3 Artworks are to remain on exhibition for the duration of the show and must be collected between 10am and 4pm Tuesday 26 March.</p> <p>ADDITIONAL INFORMATION</p> <p>4.1 Prize winners agree to allow their work(s) to be photographed for the express purpose of promoting The <i>Lost Landscape Art Prize</i>. Any reproductions of artworks will provide full attribution of the artist.</p> <p>CONDITIONS OF SALE</p> <p>5.1 Stockyard Gallery commission is 25% unless you are a gallery volunteer or committee member.</p>	<p>ENTRY FORM (print please)</p> <p>CONTACT INFORMATION</p> <p>Artist's Name _____</p> <p>Postal address _____</p> <p>Suburb/Town _____</p> <p>State _____</p> <p>Telephone _____ Mobile _____</p> <p>Home _____</p> <p>Email address _____</p> <p>PAYMENT DETAILS</p> <p>Payment method (please tick)</p> <p><input type="checkbox"/> I enclose a remittance Of \$20.00 for 1 work OR</p> <p><input type="checkbox"/> I enclose a remittance Of \$40.00 for 2 works</p> <p><input type="checkbox"/> Cheque OR</p> <p><input type="checkbox"/> Direct transfer</p> <p>Landscape</p> <p>BSB: 633 000</p> <p>ACC: 145 365 623</p> <p>PROM COAST ARTS</p> <p>STOCKYARD GALLERY & SHOP</p>	<p>ARTWORK INFORMATION</p> <p>DETAILS OF ARTWORK</p> <p>Title of artwork 1 _____</p> <p>Medium _____</p> <p>Frame size (if applicable) _____</p> <p>Sale price \$ _____</p> <p>Title of artwork 2 _____</p> <p>Medium _____</p> <p>Frame size (if applicable) _____</p> <p>Sale price \$ _____</p> <p>PROM COAST ARTS PO BOX 69 Fish Creek, Victoria 3959</p> <p>PLEASE SIGN</p> <p>Name _____</p> <p>Date _____</p> <p><small>Cover image by Yianni Banikos</small></p>
---------------------------------------------------------------------------------------------------------------------------------------------------------------------------------------------------------------------------------------------------------------------------------------------------------------------------------------------------------------------------------------------------------------------------------------------------------------------------------------------------------------------------------------------------------------------------------------------------------------------------------------------------------------------------------------------------------------------------------------------------------------------------------------------------------------------------------------------------------------------------------------------------------------------------------------------------------------------------------------------------------------------------------------------------------------------------------------------------------------------------------------------------------------------------------------------------------------------------------------------------------------------------------------------------------------------------------------------------------------------------------------------------------------------------------------------------------------------------------------------------------------------------------------------------------------------------------------------------------------------------------------------------------------------------------------------------------------------------------------------------------------------------------------------------------------------------------------------------------------------------------	------------------------------------------------------------------------------------------------------------------------------------------------------------------------------------------------------------------------------------------------------------------------------------------------------------------------------------------------------------------------------------------------------------------------------------------------------------------------------------------------------------------------------------------------------------------------------------------------------------------------------------------------------------------------------------------------------------------------------------	-------------------------------------------------------------------------------------------------------------------------------------------------------------------------------------------------------------------------------------------------------------------------------------------------------------------------------------------------------------------------------------------------------------------------------------------------------------------------------------------------------

ArtSpace Gallery Wonthaggi 1 Bent Street Wonthaggi Vic 3995
T 03 5672 5767 E artspacenquiries@gmail.com W artspacewonthaggi.com.au



Painting classes

Tuesday 1-4pm or Wednesday 6-8pm



Painting classes for the beginner thru to the very rusty. Learn at your own pace in a fun, relaxed, social atmosphere with local artist Bob Hickman. Book a block of 5 Wednesday evening classes for only \$100 ,or pay weekly for a Tuesday afternoon session at Bobs Koonwarra Studio.

Call Bob today to get started **0439 303 244**



ANGELA NEWBERRY
www.angela-newberry.co.uk



LINOCUTS & SCREENPRINTS
Traditional hands-on artist printmaker
Established in England and Australia



STOREHOUSE

KOONWARRA - 2 Koala Drive
ST KILDA - 100 Barkly Street
STUDIO ONE - Calstock, Cornwall
THOMAS BURGE at Storehouse - 0408 353 976
ANGELA at Inverloch 0455 180 445 CORNWALL 01822 834 069



The Goods Shed

via Big W Carpark, Wonthaggi



Contact: Wendy 0409555225

info@basscoastartists.org.au
www.info@basscoastartists.org.au

THE WEEK AT THE GOODS SHED STUDIO

MONDAY OPEN STUDIO 10AM TO 2PM
MEMBERS ARE ENCOURAGED TO BRING THEIR OWN MATERIALS AND CREATIVITY AND JOIN OTHERS AT THE GOODS SHED STUDIO FOR A DAY OF MAKING ART AND SOCIALISING.

1st Monday of the month - Evening Open Studio 7-10pm

TUESDAY LIFE DRAWING 10AM TO 1PM + 7PM TO 10PM
MEMBERS ARE WELCOME TO JOIN THE GROUPS WHICH HAVE A LIVE MODEL AND ARE FRIENDLY AND WELCOMING. \$25 PER SESSION TO COVER MODEL FEE.

WEDNESDAY OPEN STUDIO 10AM TO 2PM
MEMBERS ARE ENCOURAGED TO BRING THEIR OWN MATERIALS AND CREATIVITY AND JOIN OTHERS AT THE GOODS SHED STUDIO FOR A DAY OF MAKING ART AND SOCIALISING.

THURSDAY CLOSED

FRIDAY OPEN STUDIO 10AM TO 2PM
MEMBERS ARE ENCOURAGED TO BRING THEIR OWN MATERIALS AND CREATIVITY AND JOIN OTHERS AT THE GOODS SHED STUDIO FOR A DAY OF MAKING ART AND SOCIALISING.

SATURDAY

2nd SATURDAY OF THE MONTH PHOTOGRAPHY GROUP 1.30-4pm

1st SATURDAY OF THE MONTH PORTRAIT GROUP 1.30 TO 4PM.
[Not Public Holiday Weekends] Rate May to December.
A LIVE MODEL WILL SIT AT ALL SESSIONS. \$10 PER HEAD TO COVER THE FEE.

A \$5 per head MEMBERSHIP CHARGE APPLIES TO ALL GROUPS AND NEEDS TO BE PAID ON THE DAY. YOU ARE WELCOME TO COME AND TRY 2 SESSIONS BEFORE YOU NEED TO BECOME A MEMBER.



Contact: Wendy 0409 555 225 info@basscoastartists.org.au www.info@basscoastartists.org.au





Newsletter # 36
December 2018



SOL STUDIO + GALLERY
www.solstudioandgallery.com.au

MEG HAYLEY + NICK PERRIN







SOL STUDIO + GALLERY
www.solstudioandgallery.com.au

Original Art Works
Unique Furniture + Jewellery
Art Materials
Painting + Drawing Classes
(Adults and Children)
All Day Workshops
Guest Artists + Artist Talks
Prints + Commissions

Contact Meg Hayley
For Bookings + Appointments:
0408 520 576
meghayley@live.com

76 Toorak Road, Inverloch VIC 3996

GECKO STUDIO GALLERY invites you to



eSCAPE

Tony Hanning
Dennis Leversha
Adrian Johnson

13 DEC-16 JAN
opening 14 DEC 6PM



eSCAPE

GECKO STUDIO GALLERY 15 FALLS RD FISH CREEK PH 03 5683 2481
geckostudiogallery.com.au open 9-4 thurs-mon daily in Jan

SANDY POINT Art Gallery



Paintings in watercolours & oils,
inspired by the beautiful environment,
both local and international.



Artist: Mary Shaw

**33 Beach Parade
Sandy Point**

Open most days
10am - 6pm



Gallery 1 'Eclectic'

An exhibition reflecting the diverse and wide-ranging ideas created in artworks inspired from many different sources by student artists from Newhaven College in Years 10 to 12. Featuring the artworks by Ysabel Kershaw, Emily Lettbridge, Gabby Martin, Miriam Robinson, Nikita Rainey, Kelsi Vanderstaay and Chelsea Vivian.



January 2 - January 28
Opening January 5 @ 2pm




Gallery 2 - 'Two Ladies, Two Sheds...Again!'

Artists - Leslie Monahan & Helen McInnes,
January 2 - January 28 Opening January 5 @ 2pm



Gallery 3 'Across the Strait: Series Two/Passages' by Lex Palmer Bull




84 Whitelaw Street,
Meerbyn, Victoria
Open 10 - 4 (closed Tuesday)
Ph: 5664 0301
www.meerbyanartgallery.com.au

**ArtSpace Gallery Wonthaggi 1 Bent Street Wonthaggi Vic 3995
T 03 5672 5767 E artspaceenquiries@gmail.com W artspacewonthaggi.com.au**



Newsletter # 36
December 2018



GTC Design provides ArtSpace Wonthaggi with technical expertise with the ArtSpace website. Many thanks to Glen Orchard for his ongoing assistance.

INTUITIVE DESIGN E-COMMERCE SOLUTIONS SUSTAINABLE HOSTING MARKETING DESIGN

ArtSpace Wonthaggi is proudly supported by GTC Design.



<http://gtcdesign.com.au>



Intuitive Design

IS YOUR CURRENT SITE MOBILE FRIENDLY? WITH THE GROWTH OF SMART PHONES, TABLETS AND GAME CONSOLES ALL CONNECTED TO THE INTERNET YOU NEED TO MAKE SURE THAT YOUR BUSINESS SHINES ON ANY SCREEN SIZE.



E-Commerce Solutions

WE PRIDE OURSELVES ON BUILDING VISUALLY EXCITING AND EASY TO EXPLORE E-COMMERCE SOLUTIONS AND USER EXPERIENCES ON ALL DEVICES.

**ArtSpace Gallery Wonthaggi 1 Bent Street Wonthaggi Vic 3995
T 03 5672 5767 E artspaceenquiries@gmail.com W artspacewonthaggi.com.au**