

ArtSpace GALLERY

Newsletter # 40

June 2019

NEWS

18 Jun to 29 Jul 2019
Winter Solstice Exhibition
Opening 2-4pm Sunday 23rd June, ArtSpace
Wonthaggi

30 Jul to 9 Sep 2019
Open Exhibition - all artists

10 Sep to 21 Oct 2019
Arts-Print

22 Oct 2019 to 6 Jan 2020
High Season - Open to all artists!

EXHIBITIONS & EVENTS

More information about what's on at
ArtSpace Gallery at
www.artspacewonthaggi.com.au.

*Enquire about becoming an ArtSpace
volunteer!*

We need YOU!

Volunteer for a 4 hour shift,
various days and times available:
(10am-1pm / 1pm-4pm).
Contact Lynne Jansen at
ArtSpace Gallery, 03 5672 5767.



LIGHTING UP GIPPSLAND'S WINTER at **ARTSPACE Gallery**

WINTER SOLSTICE EXHIBITION

18 June – 29 July
Selected works by local artists

Official Opening
Sunday 23rd of June 1.30 – 4pm
(Presentations @ 2pm)

Winners will receive:
25yrs \$500 / 16-24 yrs \$100
Emerging artist any age - 1st prize a solo exhibition
People's Choice Award winner will receive \$200.

ArtSpace Gallery Wonthaggi 1 Bent Street Wonthaggi Vic 3995
T 03 5672 5767 E artspacenquiries@gmail.com W artspacewonthaggi.com.au



YAVA
VA

Gallery & Arts Hub



@YAVAARTS

252A MAROONDAH HIGHWAY
HEALESVILLE, 3777

YAVA.ORG.AU

INVITATION

Intercultural Arts Program
Balert Yirramboi
Island Whale Festival
Cowes, Phillip Island
5th July - 7th July 2019

With Special Guests

Uncle Bunna Lawrie
Uncle Kutcha Edwards
Aunty Fay Stewart-Muir
Matua (Uncle) Arnold Tihema
Steve Parker, Lisa Kennedy
Ron Murray, Robert Bundle
Mick Harding, Safina Stewart
Camille Monet
Tom Murray-White
Steve and Kai Schulz
Lyndal Chambers, Brian Strating
Peter Corser, Steve Sedergreen
Michael Jordan, Anthony Norris
Ruth McKittrick Chambers
Tanya Nolan, Kass Mulvany
Emily Hayes, Katie Hull-Brown
Nicki Johnson, Flip Case
Invy Horn Jam, Boomulele
Songrise, VoKallista
Both Sides of the River

Ceremonies
Drumming Circles
Artspace
Concerts
Deep Listening Circles
Music, Art and Science
Song Exchanges
Street Parade

Bookings: <http://islandwhales.com.au/program/>
Enquiries: tara.breacle@ttc21.com.au

CMVIC
We acknowledge the power and beauty of the Bunurong/Boon Wurrung Country on which this event is taking place.
We honour all the Ancestors and Elders who have lived on this land and sung it into being the strong place that it is.

Painting: Lisa Kennedy



Print workshop

Wood engraving

Sat 29 June

A full days tuition & printing

All tools/ materials supplied

Light lunch & beverages

A fun group activity

Only \$150

The Artists Quarter
Studio & Gallery

Bob Hickman
Artist Educator

0439 303 244

0800132086.COM

12 Swan Road, Kooragang



FEATURE ARTICLE ... THE BALD & THE BEAUTIFUL

Written by Ellen Hubble

The Archies Bald Portrait Prize

The criteria was set:

Create an artwork to capture a person bald through chemotherapy, alopecia, shaving, genes, just born or simply a vision of what someone might look like without hair.

The original works will focus on a person or persons but may include inanimate objects, flora or fauna.

It was a bit unique-it was a bit silly - and so it did inspire over 100 artists to enter and over 250 community members to attend the Inaugural Archies Bald Portrait and Sculptural Exhibition hosted at Archies Creek Hall.

As preview to the exhibition, also held at Archies Creek Hall, The Biggest Morning Tea was held on Thursday 23 May and hosted by Helen and John Laing.

The Opening of the Exhibition held on Friday 24 May was with MC's John and Mary Mutsaers who were passionate and erudite about the gala event.

Guest speakers were also Vesna Devcic from the Australia Alopecia Areata Foundation and Andrea Jordan from the Cancer Council. They focused on support for people who are defenceless against their hair loss and deal on a personal level about appearance and self esteem. Celebrating baldness was one way of reducing the stigma and seeing the beauty

While the quirkiness of the exhibition was embraced, it was humbled by the profound respect for those touched directly or indirectly by cancer. The major focus was inspired by the fight and courage of local well known and loved Deb Reilly who battled cancer.

In attendance were also Deb's two sons, a credit to her. On behalf of his brother Ben and his grandmother Barbara, Dylan spoke courageously about Deb's journey with cancer. Silence reigned as a tribute video was played of Deb and the song she wrote 'Come to me the Sea.'



Cr Jeff Ellis



Dylan Reilly



Clayworkers Studio @ Rescue Station Arts Wonthaggi

Learn the techniques to make sculptural and functional ceramics

Develop your own creativity in a safe and nurturing environment

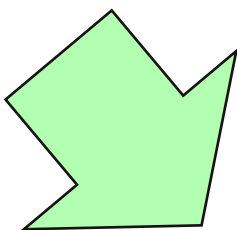
Get connected with like minded creative people

And fall in love with clay!

We offer regular weekly classes for beginner and experienced participants, one-off workshops, and studio access sessions for local ceramicists, all in our dedicated, well equipped ceramics studio

Find program details and book at
trybooking.com/eventlist/clayworkers
0473 912 704 or
clayworkers.rescuestationarts@gmail.com

84 West Area Rd Wonthaggi



DON'T FORGET ...

Workshops at Archie's Creek Hall are ongoing. Don't miss out on learning from some great artists and artisans, especially "Oils ain't Oils" with Ross Vaughn, and fabulous workshops with artist Sophie Dieu.

To find something to inspire your creativity and learn something new, go to:

<http://artspacewonthaggi.com.au/index.php/workshops/>

Gallery 1
'Silent Resilience' by Elise Judd



Sleeping Beauty




The Love of Mine

May 29 - July 1, 2019
Opening Sunday
June 2 @ 2pm

m a g
84 Whitelaw Street, Meeniyan, Victoria. Open 10 - 4 (closed Tuesday)
Ph: 5664 0101 www.meeniyanartgallery.com.au

Gallery 2
'All the small things: influence and identity' by Renee Bucknall



Dance like no one is watching



I am not responsible for your gaze

m a g
May 29 - July 1, 2019 Opening Sunday June 2 @ 2pm
84 Whitelaw Street, Meeniyan, Victoria. Open 10 - 4 (closed Tuesday)
Ph: 5664 0101 www.meeniyanartgallery.com.au

Gallery 3
'Soft Landscapes' by Zetta Karita & Yianni Banikos



Soft Landscapes

Phil Henshall Studio 1116 Main Neerim Rd, Rokeby. 3821
T 0418 318 1873W philhenshall.com.au
Studio Open 2nd W'kend ea. m'th. 10-5.
Exploring *ASPECTIVISM™*
Theme this w'kend: *"I DID like to be beside the seaside"*





Andrea Jordan, Cancer Council

Art judge Tony Hanning mentioned that on the way to the exhibition, he expected it to be just a humorous light hearted bit of a laugh. In contrast, however, he said he was blown away not only by the quality and serious standard of the artworks but by the amount of love the exhibition imbued. Young artists were also entrants with their portraits, three of whom Tony presented a certificate and \$50 each as 'Young Achievers' Award Winners.



1st Prize Winner 3D, Ray Dahlstrom

'Not Just Tarts' run by Mez Oldham and Liane Arno as usual, made an outstanding effort with the catering for the Biggest Morning tea and The Opening night of the exhibition. A sumptuous array of homemade sweet and savory delights was enjoyed by all.

Amongst the visual language of the artworks, music added to the atmosphere.

Solo Harp was performed by Robyn Mitchell at the Biggest Morning Tea as well as a segment during the opening.

The band 'KeaChange' performed Old Time, American and Celtic based tunes and songs included fiddle, mandolin, guitar, banjo and double bass.



2nd Prize Winner 2D,
Janice Orchard

Courage, compassion, love and community support became the overriding spirit of both the Biggest Morning tea and the Archies Bald Exhibition.

Proceeds and donations went to The Cancer Council

Our enormous gratitude goes also to Bass Coast Shire Council and Sponsors for their generosity and willing support.



3rd Prize Winner 2D, Matt Stone

The event was the collaboration between Archies Creek Public Hall Trust and Wonthaggi Community Gallery Inc (ArtSpace gallery).

A special thanks to the committees and also in particular, to Liane Arno for her vision and relentless drive to have this happen during May.



THE Baldessin PRESS & STUDIO

PRINTMAKING / RETREATS / RESIDENCIES / STUDIO ACCESS

Set within the idyllic surrounds of the St Andrews bushland The Baldessin Press & Studio is a place of creativity and a retreat for artists, perpetuating the generous and collaborative spirit of the renowned printmaker George Baldessin.

To keep up to date, follow us on Facebook. For the latest workshop dates and residency details please see the website.

PRINTMAKING
Etching, photogravure, monotype, drypoint, collograph, linocut, wood engraving & more.

RETREATS & WORKSHOPS
Regular weekend workshops, customised retreats and summer intensives.

RESIDENCIES
Self-contained accommodation onsite and full studio access.

90 Shaftesbury Ave, St Andrews Vic 3761 - 0448 144 449 - www.baldessinpress.com.au



ANGELA NEWBERRY
www.angela-newberry.co.uk



LINOCUTS & SCREENPRINTS
Traditional hands-on artist printmaker
Established in England and Australia



STOREHOUSE

KOONWARRA - 2 Koala Drive
ST KILDA - 100 Barkly Street
STUDIO ONE - Calstock, Cornwall
THOMAS BURGE at Storehouse - 0408 353 976
ANGELA at Inverloch 0455 180 445 CORNWALL 01822 834 069

carma cohuna gallery

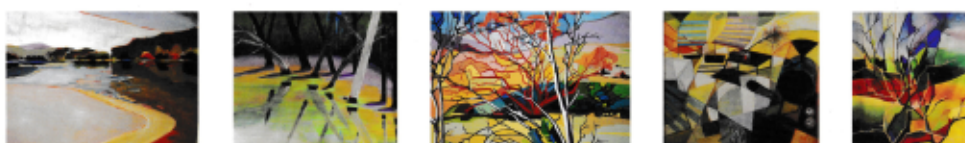
ART, PRINTS & TEXTILES



Heather Towns
2 Nardoo Street Cape Paterson
Ph 0418 263 264

zulu@heathertowns.com
www.heathertowns.com

Open most afternoons



Winners of the Archies Bald Portrait Prize:

First Prize 2D: Title 'Malcom Crichton' by Phil Henshall sponsored by L.J Hooker

First Prize 3D: Title "Twice Fired' by Ray Dahlstrom sponsored by Watersure

Second Prize 2D: Title 'Sam' by Janice Orchard sponsored by Willimas & Burns

Second Prize 3D: Title 'Archie Roache' by Pat Wishart sponsored by Advertto

Third Prize 2D: Title 'Sadly' by Matt Stone sponsored by Kathy West

Third Prize 3D: Title 'Sharmanic Figure' by Meg Viney sponsored by Adapt Design

People's Choice 2D: Title 'Monkey in Repose' by Shane Collier sponsored by Kip McGrath



ANNETTE SPINKS
DISCOVERY | A PERSONAL JOURNEY

Opening Saturday 1st June 2:00- 4:00pm
Until 6 July 2019

Mingara Gallery Phillip Island
242 Thompson Ave, Cowes
ph (03) 5952 3722 | 0457 343 771
www.mingaragallery.com.au



Helen & John Laing, hosts of the Biggest Morning Tea



Judge, Tony Hanning



MC, John Mutsaers



Winner 2D, Phil Henshall



MC, Mary Mutsaers



L-R, Ursula Theinert, Liane Arno, Angus Wishart, Erwin Bauer

Artfusion

**Sculpture and Glass
Studio Gallery**

**Steel Sculpture
Fused Glass
Commissions**

9 Anderson Rise
Anderson VIC 3995

Andrew Kasper 0407 368 538
Marlene Abela 0439 368 538

e: artfusiongallery@bigpond.com
w: artfusionstudioandgallery.com

OPEN
Thursday to Monday
10.30 - 5.00



About Us

Artfusion Studio and Gallery is the working Studio of Glass Maker Marlene Abela and Steel Sculptor Andrew Kasper.

Artfusion Studio and Gallery caters for those wishing to view or purchase an existing work of Sculpture or Glass.

Artfusion Studio and Gallery
9 Anderson Rise
Anderson
VIC 3995



Andrew Kasper 0407 038 538
Marlene Abela 0439 368 538

e: artfusiongallery@bigpond.com
w: artfusionstudioandgallery.com

STEFANI HILLTOP GALLERY





Artist in residence:
Bianca Biesuz-Stefani

OPEN MOST DAYS
or by appointment
03 5683 2253
0457 832 253


**39 Keanes Road
Fish Creek**

The Press Gallery Project - Fish Creek



The Goods Shed

via Big W Carpark, Wonthaggi



Contact: Wendy 0409555225
info@basscoastartists.org.au
www.info@basscoastartists.org.au

THE WEEK AT THE GOODS SHED STUDIO

MONDAY OPEN STUDIO 10AM TO 2PM

MEMBERS ARE ENCOURAGED TO BRING THEIR OWN MATERIALS AND CREATIVITY AND JOIN OTHERS AT THE GOODS SHED STUDIO FOR A DAY OF MAKING ART AND SOCIALIZING.

1st Monday of the month - Evening Open Studio 7-10pm

TUESDAY LIFEDRAWING 10AM TO 1PM + 7PM TO 10PM

MEMBERS ARE WELCOME TO JOIN THE GROUPS WHICH HAVE A LIVE MODEL AND ARE FRIENDLY AND WELCOMING. \$25 per session to cover model fee.

WEDNESDAY OPEN STUDIO 10AM TO 2PM

MEMBERS ARE ENCOURAGED TO BRING THEIR OWN MATERIALS AND CREATIVITY AND JOIN OTHERS AT THE GOODS SHED STUDIO FOR A DAY OF MAKING ART AND SOCIALIZING.

THURSDAY CLOSED

FRIDAY OPEN STUDIO 10AM TO 2PM

MEMBERS ARE ENCOURAGED TO BRING THEIR OWN MATERIALS AND CREATIVITY AND JOIN OTHERS AT THE GOODS SHED STUDIO FOR A DAY OF MAKING ART AND SOCIALIZING.

SATURDAY

3rd SATURDAY OF THE MONTH PHOTOGRAPHY GROUP 1.30-4pm

1st SATURDAY OF THE MONTH PORTRAIT GROUP 1.30 TO 4PM.

(Not Public Holiday Weekends) Runs May to December.

A LIVE MODEL WILL SIT AT ALL SESSIONS. \$10 PER HEAD TO COVER THE FEE.

A \$3 per head ARENTIES CHARGE APPLIES TO ALL GROUPS AND NEEDS TO BE PAID ON THE DAY.

YOU ARE WELCOME TO COME AND TRY 2 SESSIONS BEFORE YOU NEED TO BECOME A MEMBER.



Contact: Wendy 0409 555 225 info@basscoastartists.org.au www.info@basscoastartists.org.au



Powlett River Primary School
No 5423

9 - 21 Bent Street
Dalyston, 3902.
Ph: (03) 5678 7240
Fax: (03) 5678 7543
e-mail: ars@powlett-river.vic.edu.au
ABN: 43 204 028 200



Powlett River Primary School is having their fourth annual Arts festival on the 20th of October from 11am to 3pm. We are aiming raise much needed funds for our little school while opening our doors to the wider community and to celebrate the Arts and the wonderful artists in the area.

With the success of the 100th year celebration we will continue to showcase our school's unique history with changing displays.

We are looking for local businesses to help support our event by donating prizes we can raffle or auction off on the day.

If you are unable to help this event by donating, you can help us in other ways, you can be a part of the main event by entering an arts/craft piece in the exhibition as a group/individual or by spreading the word for us.

Please share with your friends, family, business contacts and display our poster in your office, shop or place of business.

You can also find us on Facebook

<https://www.facebook.com/powlettriverartshow/>

If you have any questions please contact:

Ellen 0401341686

Carlie 0409539060

2019 CLUNES Ceramic Award

\$14,000 IN PRIZES
ENTRIES OPEN - Monday 11 March 2019
ENTRIES CLOSE - Friday 26 July 2019

EXHIBITION
Saturday 20 September to
Sunday 13 October 2019
Union Bank Arts Centre
22 Fraser Street, Clunes, Victoria

Winner 2017 Clunes Ceramic Award, WAHESA LUDAS - Pearl Agis

Further information and entry form:
www.clunesceramicaward.com.au
Contact Creative Clunes on 03 5365 3947



POWLETT RIVER PRIMARY SCHOOL ARTS FESTIVAL

Exhibition: Sunday 20th October

Entries Close: Thursday 10th October

For further information contact:

prpsfundraising@hotmail.com

<https://m.facebook.com/powlettriverartshow>

0401 341 686 0409 539 060

ENTRY FEES

Adults: \$5 per exhibit (maximum of 10 items)

Students: \$3 per exhibit (maximum of 10 items)

OR a flat fee for a space for group entries can be negotiated by contacting us.

Fees must be received with entry form by 16th October, they can be delivered or sent to

Powlett River Primary School 82 - 96 Daly St, Dalyston, VIC 3992

Only cash (correct money needed) or cheque/money order made out to Powlett River Primary School can be accepted.

Powlett River Arts Festival Conditions of Entry:

All work must be the artists own.
An exhibit may be one or a group of items but this must be made clear on the entry form and on the work itself.
The organizers will sort entries and allocate categories depending on the quantity and variety of work to be shown.
All items will be assessed and the organizers will endeavour to display all work but we reserve the right not to exhibit every entry.
All work must be delivered ready to hang/display with artist name, title and contact number placed securely on the back/underside of work. Student work may be mounted only but pins or clips used to display art may leave marks on mount.
All items for sale must have a clear price tag attached.
Exhibitors will be responsible for insurance of work in transit, in storage and whilst on exhibition. All care will be taken however no responsibility will be accepted for exhibits.
There will be no commission charged on works sold but as this is a fundraising event all donation amounts will be gratefully received.
By entering you agree to the conditions above

CLOSING DATE FOR ENTRIES: OCTOBER 16th, 2019

ENTRIES MUST BE DELIVERED TO POWLETT RIVER PRIMARY SCHOOL,

82 - 96 DALY ST, DALYSTON BETWEEN:

*8:30AM and 10:30AM *2PM AND 4PM MONDAY 14TH OCTOBER

*8:30AM AND 10:30AM TUESDAY 15TH OCTOBER

*2PM AND 4PM WEDNESDAY 16TH OCTOBER

ENTRIES MUST BE COLLECTED FROM THE SCHOOL BETWEEN:

*3PM AND 4PM SUNDAY 20ST OCTOBER

*9AM AND 10AM OR 2PM AND 4PM MONDAY 21ND OCTOBER

We cannot provide secure storage for artworks so please pick up as soon as possible.

Entry forms available at ArtSpace Wonthaggi.



Newsletter # 40
June 2019



MEDIA RELEASE
Saturday May 25 2019



Announcing the Meg Viney-Bell Fibre Arts Fellowship for Gippsland artists



Image by Trevor Foon. AGGIAR70Q'S VESTMENT by Meg Viney-Bell.

To all the contributors,

Thanks for supporting the Archies Creek Hall, inaugural Biggest Morning Tea. Your generous donations which contributed to the enormous success of our raffle.

The ABMT was a great success and with the money collected on the day and donations received later, we raised an amazing \$2,533.

So on behalf of Cancer Council Victoria, thanks again for your contribution to the BMT event. It was greatly appreciated.

Best wishes,

Helen & John Laing

Regional Arts Victoria and Meg Viney-Bell are pleased to announce the inaugural Meg Viney-Bell Fibre Arts Fellowship for Gippsland artists wishing to grow their practice, explore their work, and develop new skills.

The intention of the \$10,000 Fellowship is to revive fibrearts as an art form in the region supporting artists towards public presentation through exhibitions, artists' talks or workshops.

The Fellowship was announced by Viney-Bell in Stratford today as part of the Regional Arts Victoria Annual General Meeting and Member Celebration.

As a fibre artist, Meg Viney-Bell concerns herself with the 'nature of containment' and what that means for emotional, spiritual and physical security. Her sculptures suggest that all life comes from a vessel, as something that holds and nurtures lifeforms from gestation to emergence - be it an egg, a cocoon, a uterus, a bud, a seedpod, a shell - the reality is Universal. Her work visits this central theme throughout her arts practice.

"The beauty in fibreart is of the physical and personal process of the artist. It is a rich cultural skill to work with natural materials in developing works of art that prioritise aesthetic value over utility. When artists come to me for mentorship or guidance, what grows is their authenticity and integrity of practise. It is a wonderful method of artmaking that is unique to the individual and their own cultural connection." says **Viney-Bell**.

Administered by Regional Arts Victoria, **the Fellowship opens on Thursday 1 August** for artists residing across Gippsland who have a minimum two years' experience in fibre arts.

"This is a wonderful opportunity for Gippsland artists, and an extraordinary gesture by a local practitioner," says **Joe Toohey**, Regional Arts Victoria Executive Director. *"We're thrilled to be supporting Meg in realising her ambition to see fibrearts thrive in the East of our state."*

Regional Arts Victoria is the peak body for regional artists and arts organisations in Victoria and the leading organisation for regional creative practice in Victoria. We are inspired by arts across the state, and through partnerships, programming and projects, we develop creative practice all over Victoria.

END

Meg Viney-Bell is available for interview.

MEDIA CONTACT Catherine French 0402 63 84 69 | cfrench@rav.net.au

**ArtSpace Gallery Wonthaggi 1 Bent Street Wonthaggi Vic 3995
T 03 5672 5767 E artspacenquiries@gmail.com W artspacewonthaggi.com.au**



Painting classes

Tuesday 1-4pm or Wednesday 6-8pm



Painting classes for the beginner thru to the very rusty. Learn at your own pace in a fun, relaxed, social atmosphere with local artist Bob Hickman. Book a block of 5 Wednesday evening classes for only \$100, or pay weekly for a Tuesday afternoon session at Bobs Koonwarra Studio.

Call Bob today to get started **0439 303 244**



On Saturday, June 29, Loch Village hosts its first *Makers Market*

Open from 10am to 3pm,
the event occurs at three Loch venues

Loch Memorial Hall
the Masonic Lodge

and Loch & District Bowling Club.

*artisan jewellery - textiles
candles - oils*

*miniature rooms - fairy gardens
preserves, nougat & cupcakes*



Product is sourced from
local makers of all ages.

'Make and Takes' are available
on the day as is a huge raffle.



*Offering a wide variety of handicrafts,
our makers market is sure to have
something to delight one and all.*

WINTER JOURNEY

Franz Schubert's greatest song cycle

Nathan Lay, baritone with **Brian Chapman**, piano



Sung in a
New English
Translation
Program includes
works for solo
piano by Schubert
and Schumann
performed on a
Steinway
grand piano



Afternoon Tea included – Bar Service available

Performed in

The Gallery at ARC Yinnar

19-23 Main St, Yinnar VIC 3869

2:30 pm Sunday June 16, 2019

Admission

Adult: \$30 Full Member/Conc.: \$25 Student: \$15

Bookings

www.trybooking.com/482896

Enquiries

E: lucy.chapman1@bigpond.com
P: 0438 078 969



Newsletter # 40
June 2019



SOL STUDIO + GALLERY
www.solstudioandgallery.com.au

MEG HAYLEY + NICK PERRIN

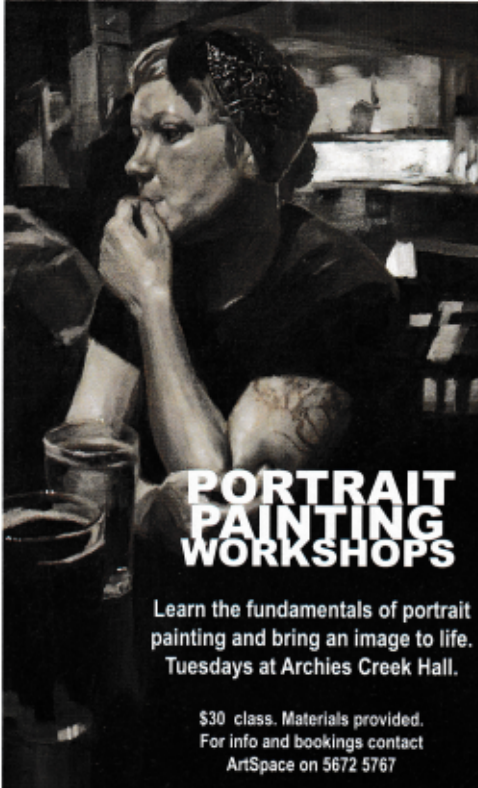




Original Art Works
Unique Furniture + Jewellery
Art Materials
Painting + Drawing Classes (Adults and Children)
All Day Workshops
Guest Artists + Artist Talks
Prints + Commissions

Contact Meg Hayley
For Bookings + Appointments:
0408 520 576
meghayley@live.com

76 Toorak Road, Inverloch VIC 3996



PORTRAIT PAINTING WORKSHOPS

Learn the fundamentals of portrait painting and bring an image to life. Tuesdays at Archies Creek Hall.

\$30 class. Materials provided.
For info and bookings contact
ArtSpace on 5672 5767

SANDY POINT Art Gallery



Paintings in watercolours & oils, inspired by the beautiful environment, both local and international.



Artist: Mary Shaw

**33 Beach Parade
Sandy Point**

Open most days
10am - 6pm



Celia Rosser Gallery





Andrew Rosser - Director
andrew@cellarosserglassery.com.au
0455 777 334

www.cellarosserglassery.com.au
Promontory Road, Fish Creek 3959
Open Fri, Sat, Sun 10am - 4pm
Winter Sat, Sun



Newsletter # 40
June 2019

GTC Design provides ArtSpace Wonthaggi with technical expertise with the ArtSpace website. Many thanks to Glen Orchard for his ongoing assistance.

small sculpture | 'skʌlptʃə | show

OPENING NIGHT
FRIDAY 7 JUNE 2019 (4-6PM)
EXHIBITION
THURSDAY 6 JUNE 2019 -
MONDAY 1 JULY 2019

STOCKYARD GALLERY
12 MCDONALD STREET FOSTER VIC 3960
WWW.STOCKYARDGALLERYANDSHOP.ORG.AU
STOCKYARDGALLERY@DCSI.NET.AU
PH: 5682 1125
OPEN DAILY
10.00AM TO 4.00PM



INTUITIVE DESIGN E-COMMERCE SOLUTIONS SUSTAINABLE HOSTING MARKETING DESIGN

ArtSpace Wonthaggi is proudly supported by GTC Design.

<http://gtcdesign.com.au>

Intuitive Design

IS YOUR CURRENT SITE MOBILE FRIENDLY? WITH THE GROWTH OF SMART PHONES, TABLETS AND GAME CONSOLES ALL CONNECTED TO THE INTERNET YOU NEED TO MAKE SURE THAT YOUR BUSINESS SHINES ON ANY SCREEN SIZE.



E-Commerce Solutions

WE PRIDE OURSELVES ON BUILDING VISUALLY EXCITING AND EASY TO EXPLORE E-COMMERCE SOLUTIONS AND USER EXPERIENCES ON ALL DEVICES.

**ArtSpace Gallery Wonthaggi 1 Bent Street Wonthaggi Vic 3995
T 03 5672 5767 E artspacenquiries@gmail.com W artspacewonthaggi.com.au**