

ArtSpace GALLERY

Newsletter # 42

September 2019

NEWS, EXHIBITIONS & EVENTS

10 Sep to 21 Oct 2019

Arts-Print

Opening 2-4pm 15 Sep 2019

22 Oct 2019 to 2 Dec 2019

Extra-Dimensional Exhibition

Opening 2-4pm 27 Oct 2019

3 Dec 2019 to 6 Jan 2020

Open to all artists - High Season



Critters @ ArtSpace

More information about what's on at
ArtSpace Gallery at
www.artspacewonthaggi.com.au.

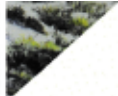
*Enquire about becoming an
ArtSpace volunteer!*

We need YOU!

Volunteer for a 3 hour shift,
various days and times available:
(10am-1pm / 1pm-4pm).
Contact Lynne Jansen at
ArtSpace Gallery, 03 5672 5767.



ArtSpace Gallery Wonthaggi 1 Bent Street Wonthaggi Vic 3995
T 03 5672 5767 E artspaceenquiries@gmail.com W artspacewonthaggi.com.au



your art collection Exhibition 2019



From top clockwise
Mary Hennekam Early Surfen Cape Woolamai
Diana Edwards Awakening Silverleaves
Julie Lundgren-Coulter Afternoon
Adrian Johnson Coastal Flora Bass Coast



your art collection Exhibition 2019

On behalf of Bass Coast Shire Council,
 Mayor, Cr Brett Tessari invites you and a guest to the

Bass Coast Your Art Collection Exhibition 2019

The Exhibition features works by award winners:
 Diana Edwards, Mary Hennekam, Adrian Johnson
 and Julie Lundgren-Coulter.

When: Saturday, 21 September 2019
Where: Wonthaggi Union Community Arts Centre,
 96 Graham Street, Wonthaggi
Time: 12.00pm to 2.00pm
RSVP: Monday, 19 September 2019
 David Burrows
 e: David.Burrows@basscoast.vic.gov.au
 p: 1300 BCOAST (226 278) or (03) 5671 2414

Exhibition Judges: David O'Halloran, Tobias Hengerveld,
 and Juan Ford will announce the winning artwork

Live music – Nick Huigs
 Exhibition time: Monday, 23 September
 to Thursday, 10 October, 2019
 Open weekdays from 10.00am to 4.00pm



Gallery & Arts Hub

@YAVAARTS

252A MAROONDAH HIGHWAY
 HEALESVILLE, 3777

YAVA.ORG.AU

FEATURE ARTICLE ... AMANDA THOMPSON

Written by Liane Arno



Amanda Thompson was home alone cosily ensconced in her jammies when an almighty noise came from next door. With her husband away there was no way she was going to investigate and so buried herself deeper into the lounge chair and hoped that whatever caused it would go away. But she couldn't ignore the urgent banging on the door that followed. Amanda opened it to find a young woman on the doorstep shouting at her that there was a car on fire at her neighbour's place.

And so what became a burnt out wreck became the latest inspiration for Amanda's art. Recently she has been heading up to the local HPV Pine Plantation which is often the location that the less savoury elements of Morwell take their stolen cars to burn in the hope that it removes all trace of the thieves' identities. Amanda transforms the cars into abstract images, carving the designs into wood from which she then prints her large scale multi panel woodcuts.



"Tree of Life"

She takes her ideas from her immediate surroundings and the looming power stations in Morwell provide her with many ideas. In some ways her work is a social commentary on her local environment as well as poking fun at commercialisation. She is saddened by political injustice but recognises there is much energy on trying to revitalise a low socio economic community which has seen a lot of drug use, unemployment and crime.

From an early age Amanda knew what she wanted to do. But with a father as a truckie in Melbourne's east she had little encouragement. All she can recall of painting at school was completing a 'painting by numbers' piece. It wasn't until she was in her early thirties and had been nursing for many years that she decided to, "stop procrastinating – just do it," and enrol at her local TAFE.

She adored the study and learning her craft. So much so that she went on to complete her Masters some years later.



Clayworkers Studio @ Rescue Station Arts Wonthaggi

Learn the techniques to make sculptural and functional ceramics

Develop your own creativity in a safe and nurturing environment

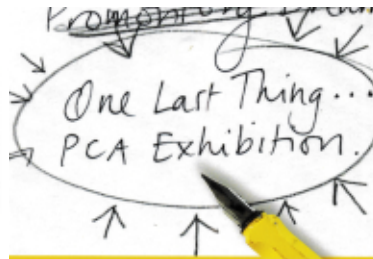
Get connected with like minded creative people

And fall in love with clay!

We offer regular weekly classes for beginner and experienced participants, one-off workshops, and studio access sessions for local ceramicists, all in our dedicated, well equipped ceramics studio

Find program details and book at trybooking.com/eventlist/clayworkers
0473 912 704 or clayworkers.rescuestationarts@gmail.com

ac West Area Rd Wonthaggi



TO SIGNIFY AND CELEBRATE THE PASSING OF PROM COAST ARTS, ALL MEMBERS PAST AND PRESENT WERE INVITED TO PARTICIPATE IN A FINAL EXHIBITION.

OPENING NIGHT
FRIDAY 20 SEPTEMBER 2019 6PM

EXHIBITION
THURSDAY 12 SEPTEMBER TO
MONDAY 7 OCTOBER 2019

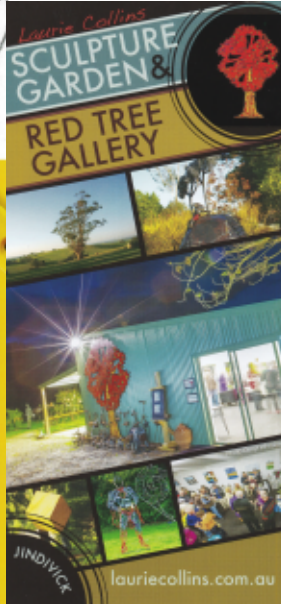
STOCKYARD GALLERY
12 McDONALD STREET FOSTER VIC 3960
WWW.STOCKYARDGALLERYANDSHOP.ORG.AU
STOCKYARDGALLERY@DCSI.NET.AU

OPEN DAILY
10.00AM TO 4.00PM



DESIGN BY ANNE MILLER

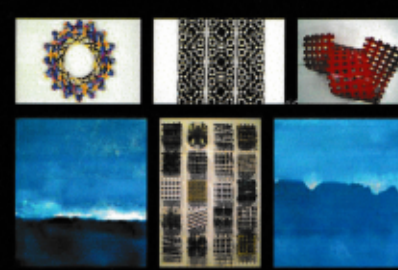
STOCKYARD GALLERY
SOUTH COAST VICTORIA



Phil Henshall Studio 1116 Main Neerim Rd, Rokeby. 3821
T 0418 318 187 3W philhenshall.com.au
Studio Open 2nd W'kend ea. m'th. 10-5.
Exploring **ASPECTIVISM™**
Theme this w'kend: "I DID like to be beside the seaside"



WINDABANDI STUDIOS



MANDY GUNN
Contemporary Art in a architect designed studio gallery

Mandy Gunn is a well known artist who has exhibited throughout Australia. She trained at the Victorian College of the Arts where she completed her Masters Degree in 2000. She has work in many public and private collections and has been Artist in residence in a number of places including Broken Hill, Bundanon and Aurukun Community in Far North Queensland. She has undertaken a number of funded projects for Arts Victoria and the Australia Council, has taught at RMIT for many years and currently runs classes in her own studio.

A selection of her work can be viewed at www.mandygunnart.com



Windabandi Studios is architecturally designed and built as a working studio and gallery space on a 100 acres registered wildlife sanctuary. Windabandi gateway is on the right hand side, 7.5km from Tarwin Lower roundabout towards Walkerville. Follow the driveway (1.5km) and turn left into "Windabandi". Please watch out for wildlife.

Please ring to make a time to visit
Ph (03) 5663 5577, Mob 0411 25 7045
746 Walkerville Rd, Tarwin Lower, Victoria, 3956

She enjoyed the way the curriculum provided a taste of many types of art and craft and then directed the students into an area of specialisation. For Amanda it was print making.

Amanda tells me it can take months to complete a work. Not much of an hourly rate! She finds it a meditative process, carving the intricate lines into the wood. And always accompanied by music. I see if I can pin her down on her tastes and she laughs as she tells me it is quite eclectic – from rock music by 9 Inch Nails to contemporary classical music by the Kronos Quartet. As distinct from painting which she finds is a solitary pursuit, Amanda enjoys the social element that brings people together for the printing process associated with printmaking.

Amanda is thrilled to part of the ArtSprint Exhibition along with Bob Hickman, Susan Hall and others. She tells me she thinks the light in ArtSpace is perfect for displaying works. You will have to come along and see for yourself. The Opening is at 2pm on the 15th of September.



"Factory
Detail"

"Factory
Detail 1"



THE Baldessin PRESS & STUDIO

PRINTMAKING / RETREATS / RESIDENCIES / STUDIO ACCESS

Set within the idyllic surrounds of the St Andrews bushland The Baldessin Press & Studio is a place of creativity and a retreat for artists, perpetuating the generous and collaborative spirit of the renowned printmaker George Baldessin.

To keep up to date, follow us on Facebook. For the latest workshop dates and residency details please see the website.

PRINTMAKING
Etching, photogravure, monotype, drypoint, collograph, linocut, wood engraving & more.

RETREATS & WORKSHOPS
Regular weekend workshops, customised retreats and summer intensives.

RESIDENCIES
Self-contained accommodation onsite and full studio access.

90 Shaftesbury Ave, St Andrews Vic 3761 - 0448 144 449 - www.baldessinpress.com.au



ANGELA NEWBERRY
www.angela-newberry.co.uk



LINOCUTS & SCREENPRINTS
Traditional hands-on artist printmaker
Established in England and Australia



STOREHOUSE

KOONWARRA - 2 Koala Drive
ST KILDA - 100 Barkly Street
STUDIO ONE - Calstock, Cornwall
THOMAS BURGE at Storehouse - 0408 353 976
ANGELA at Inverloch 0455 180 445 CORNWALL 01822 834 069

carma cohuna gallery

ART, PRINTS & TEXTILES



Heather Towns
2 Nardoo Street Cape Paterson
Ph 0418 263 264

zulu@heathertowns.com
www.heathertowns.com

Open most afternoons





Print workshop

Wood engraving

Sat 12 October

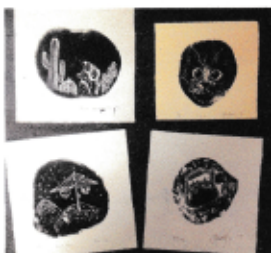
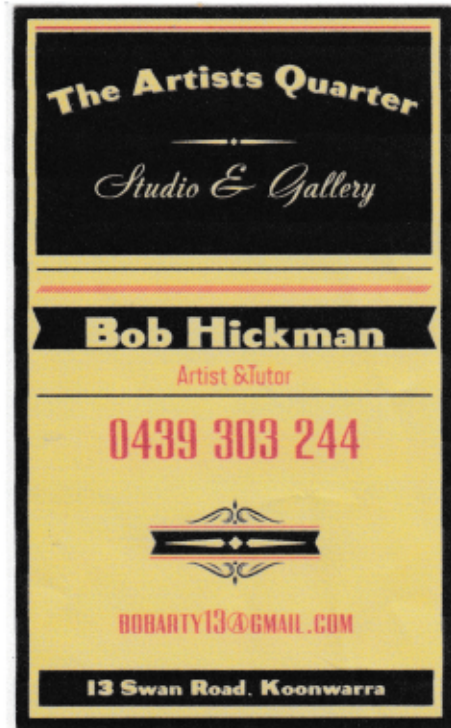
A full days tuition & printing

All tools/ materials supplied

Light lunch & beverages

A fun group activity

Only \$150



Meeniyar Art Gallery presents
'A Natural Connection'
works by Connected Voices

Exhibiting Artists:
Diane Mattiske, Jill Miglietti, Heather Walters

October 2 - October 28, 2019 Opening October 6 @ 2pm

m a g
meeniyar art gallery

84 Whitehaw Street, Meeniyar, Victoria.
Open 10 - 4 (closed Tuesday)
Ph: 5664 0101
www.meeniyarartgallery.com.au

INTUITIVE DESIGN E-COMMERCE SOLUTIONS SUSTAINABLE HOSTING MARKETING DESIGN

GTC Design provides ArtSpace Wonthaggi with technical expertise with the ArtSpace website. Many thanks to Glen Orchard for his ongoing assistance.

<http://gtcdesign.com.au>

Intuitive Design
IS YOUR CURRENT SITE MOBILE FRIENDLY? WITH THE GROWTH OF SMART PHONES, TABLETS AND GAME CONSOLES ALL CONNECTED TO THE INTERNET YOU NEED TO MAKE SURE THAT YOUR BUSINESS SHINES ON ANY SCREEN SIZE.

E-Commerce Solutions
WE PRIDE OURSELVES ON BUILDING VISUALLY EXCITING AND EASY TO EXPLORE E-COMMERCE SOLUTIONS AND USER EXPERIENCES ON ALL DEVICES.



Newsletter # 42
September 2019

Artfusion

Sculpture and Glass
Studio Gallery

Steel Sculpture
Fused Glass
Commissions

9 Anderson Rise
Anderson VIC 3995

Andrew Kasper 0407 368 538
Marlene Abela 0439 368 538

e: artfusiongallery@bigpond.com
w: artfusionstudioandgallery.com

OPEN
Thursday to Monday
10.30 - 5.00

About Us

Artfusion Studio and Gallery is the working Studio of Glass Maker Marlene Abela and Steel Sculptor Andrew Kasper.

Artfusion Studio and Gallery caters for those wishing to view or purchase an existing work of Sculpture or Glass.

Artfusion Studio and Gallery
9 Anderson Rise
Anderson
VIC 3995



Andrew Kasper 0407 038 538
Marlene Abela 0439 368 538

e: artfusiongallery@bigpond.com
w: artfusionstudioandgallery.com

STEFANI HILLTOP GALLERY

Artist in residence:
Bianca Biesuz-Stefani

OPEN MOST DAYS
or by appointment
03 5683 2253
0457 832 253

39 Keanes Road
Fish Creek

The Press Gallery Project, Fish Creek

The Goods Shed

via Big W Carpark, Wonthaggi

Contact: Wendy 0409555225
info@basscoastartists.org.au
www.info@basscoastartists.org.au



BASS COAST ARTISTS SOCIETY

The Week at The Goods Shed 2019

All Sessions - Beginner to Advanced Welcome and Encouraged. Some sessions run during school terms only but ask convenor.

Day	Time	Details	Cost
Every Monday	10 - 3pm	Open Studio - Convenor Hazel Billington	\$3 each
1 st & 2 nd Monday of month	7 - 10pm	Evening Open Studio - Convenor Judy Soerink	\$3 each
1 st & 3 rd Tuesday of month	10 - 12pm	Life Drawing - Convenor Diana Holmberg Cost of Model shared	Max \$15 each, less if more than 4
1 st & 3 rd Tuesday of month	1:30 - 3:30pm	Oil painting - Tutored class with Ross Vaughan Convenor Diana Holmberg	\$15 each
Every Tuesday	6 - 9pm	Life Drawing - Convenor Paul Seitchell Cost of Model shared	Max \$25 each, less if more than 4
Every Wednesday	10 - 3pm	Open Studio - Convenor Gloria Attwood	\$3 each
Every Thursday	9:30 - 1pm	Open Studio - Diana Holmberg	\$3 each
Every Friday	9:30 - 1pm	Open Studio - Carol Price	\$3 each
Every Saturday	10 - 12:30pm	Mosaics - Tutored class with Jacqui Keogh	\$3 each
3 rd Saturday of month	1:30 - 4:30pm	Camera Club - Convenor Gayle Marian	\$3 each

- For safety and insurance purposes it is important that you sign the register when you arrive.
- Please check with convenors that the sessions will be running with enough attendees.

Enquiries: 0487 671 888

***Please Note - Pets are not allowed in the studio

Email: info@basscoastartists.org.au

Updated March 2019

ArtSpace Gallery Wonthaggi 1 Bent Street Wonthaggi Vic 3995
T 03 5672 5767 E artspacenquiries@gmail.com W artspacewonthaggi.com.au



Powlett River Primary School
No 5423

9 - 21 Bent Street
Dalyston, 3902.
Ph: (03) 5678 7240
Fax: (03) 5678 7543
e-mail: ars@powlett-river.vic.edu.au
ABN: 43 204 028 200



Powlett River Primary School is having their fourth annual Arts festival on the 20th of October from 11am to 3pm. We are aiming raise much needed funds for our little school while opening our doors to the wider community and to celebrate the Arts and the wonderful artists in the area.

With the success of the 100th year celebration we will continue to showcase our school's unique history with changing displays.

We are looking for local businesses to help support our event by donating prizes we can raffle or auction off on the day.

If you are unable to help this event by donating, you can help us in other ways, you can be a part of the main event by entering an arts/craft piece in the exhibition as a group/individual or by spreading the word for us.

Please share with your friends, family, business contacts and display our poster in your office, shop or place of business.

You can also find us on Facebook

<https://www.facebook.com/powlettriverartshow/>

If you have any questions please contact:

Ellen 0401341686

Carlie 0409539060

2019 CLUNES Ceramic Award

\$14,000 IN PRIZES
ENTRIES OPEN - Monday 11 March 2019
ENTRIES CLOSE - Friday 26 July 2019

EXHIBITION
Saturday 20 September to
Sunday 13 October 2019
Union Bank Arts Centre
22 Fraser Street, Clunes, Victoria

Winner 2017 Clunes Ceramic Award, WAHESA LUDAS - Pearl Agis

Further information and entry form:
www.clunesceramicaward.com.au
Contact Creative Clunes on 03 5365 3947



POWLETT RIVER PRIMARY SCHOOL ARTS FESTIVAL

Exhibition: Sunday 20th October

Entries Close: Thursday 10th October

For further information contact:

prpsfundraising@hotmail.com

<https://m.facebook.com/powlettriverartshow>

0401 341 686 0409 539 060

ENTRY FEES

Adults: \$5 per exhibit (maximum of 10 items)

Students: \$3 per exhibit (maximum of 10 items)

OR a flat fee for a space for group entries can be negotiated by contacting us.

Fees must be received with entry form by 16th October, they can be delivered or sent to

Powlett River Primary School 82 - 96 Daly St, Dalyston, VIC 3992

Only cash (correct money needed) or cheque/money order made out to Powlett River Primary School can be accepted.

Powlett River Arts Festival Conditions of Entry:

All work must be the artists own.
An exhibit may be one or a group of items but this must be made clear on the entry form and on the work itself.
The organizers will sort entries and allocate categories depending on the quantity and variety of work to be shown.
All items will be assessed and the organizers will endeavour to display all work but we reserve the right not to exhibit every entry.
All work must be delivered ready to hang/display with artist name, title and contact number placed securely on the back/underside of work. Student work may be mounted only but pins or clips used to display art may leave marks on mount.
All items for sale must have a clear price tag attached.
Exhibitors will be responsible for insurance of work in transit, in storage and whilst on exhibition. All care will be taken however no responsibility will be accepted for exhibits.
There will be no commission charged on works sold but as this is a fundraising event all donation amounts will be gratefully received.
By entering you agree to the conditions above

CLOSING DATE FOR ENTRIES: OCTOBER 16th, 2019

ENTRIES MUST BE DELIVERED TO POWLETT RIVER PRIMARY SCHOOL,

82 - 96 DALY ST, DALYSTON BETWEEN:

*8:30AM and 10:30AM *2PM AND 4PM MONDAY 14TH OCTOBER

*8:30AM AND 10:30AM TUESDAY 15TH OCTOBER

*2PM AND 4PM WEDNESDAY 16TH OCTOBER

ENTRIES MUST BE COLLECTED FROM THE SCHOOL BETWEEN:

*3PM AND 4PM SUNDAY 20ST OCTOBER

*9AM AND 10AM OR 2PM AND 4PM MONDAY 21ND OCTOBER

We cannot provide secure storage for artworks so please pick up as soon as possible.

Entry forms available at ArtSpace Wonthaggi.



SOL STUDIO + GALLERY
www.solstudioandgallery.com.au

MEG HAYLEY + NICK PERRIN







SOL STUDIO + GALLERY
www.solstudioandgallery.com.au

- Original Art Works
- Unique Furniture + Jewellery
- Art Materials
- Painting + Drawing Classes (Adults and Children)
- All Day Workshops
- Guest Artists + Artist Talks
- Prints + Commissions

Contact Meg Hayley
For Bookings + Appointments:
0408 520 576
meghayley@live.com

76 Toorak Road, Inverloch VIC 3996



Painting classes

Tuesday 1-4pm or Wednesday 6-8pm







Painting classes for the beginner thru to the very rusty. Learn at your own pace in a fun, relaxed, social atmosphere with local artist Bob Hickman. Book a block of 5 Wednesday evening classes for only \$100, or pay weekly for a Tuesday afternoon session at Bobs Koonwarra Studio.

Call Bob today to get started **0439 303 244**

SANDY POINT Art Gallery



Paintings in watercolours & oils, inspired by the beautiful environment, both local and international.





Artist: Mary Shaw

**33 Beach Parade
Sandy Point**

**Open most days
10am - 6pm**



Celia Rosser Gallery

Andrew Rosser - Director
andrew@cellarosserglassery.com.au
0455 777 334

www.cellarosserglassery.com.au
Promontory Road, Fish Creek 3959
Open Fri, Sat, Sun 10am - 4pm
Winter Sat, Sun